

Painting Flowers

~ Group & Individual Projects ~

eBook



Easy Step-by-Step Instructions

Judi Parkinson

Share-Time Pictures

Part 1 of instructions to be printed

Published 2011 in Brisbane Judi Parkinson PO Box 685 Albion Qld 4010

Copyright © Judi Parkinson 2011
All rights reserved

No part of this publication may be reproduced or copied by any person or organisation via any media including all mechanical, photographic and electronic means. Permission for reproduction or photocopying of any part of the contents is not granted and doing so is in breach of copyright laws unless prior written permission from the copyright owner has been given. Permission is granted by the copyright owner to the purchaser for the printing of one (1) printed copy only, or for the replacement of damaged and used templates.

Parkinson, Judi, 1948-

Painting Flowers ~ Group & Individual Projects ~ eBook - easy step-by-step instructions
Publisher: Brisbane: Judi Parkinson for Share-Time Pictures, 2011

ISBN: 978 0 9870518 3 7

Artwork, Photography & Design: Judi Parkinson

This eBook is designed for a group and individual art projects. Some artists may require assistance from a family, friends, carers or Diversional Therapists. This activity is designed to facilitate enjoyment and personal satisfaction.

www.sharetimepictures.com.au

CARE ACTIVITIES @ ETSY

Materials List

Acrylic Paints:

ARTIST QUALITY or STUDENT QUALITY

Titanium White	White
Mars Black	Black
Brilliant Magenta	Magenta
Indian Yellow	Yellow Oxide
Transparent Yellow	Cool Yellow
Orange	Orange
Dioxide Purple	Violet
Permanent Light Green	Green Light
Olive Green	-
Forest Green	Forest Green
Raw Sienna	Raw Sienna
Burnt Sienna	Burnt Sienna
Red Gold	Gold Oxide
Alizarin Crimson	Cool Red
Naphthol Red Light	Warm Red
Cerulean Blue	Cobalt Blue Hue

10 Canvases: 20 x 25.5cm (8 x 10inches)

eg. canvas boards or stretched canvas, plywood, cardboard or paper

Acrylic Paint Binder Medium (optional, please see note below)

Acrylic Matt or Gloss Varnish

Charcoal Stick, Light

HB pencils

Pencil sharpener and eraser

Round Brushes - small to medium sizes

Flat Brushes - small to medium sizes

One script brush

One Fan Brush

Additional Requirements

Tracing paper (or greaseproof paper wrap)

Rags (or paper towelling)

Jars for rinsing water/brushes

Sealable, discardable jars for storage of mixed paint colours

Aprons or smocks

Water atomizer (please see below)

Printed copies of the A4 templates & photos you have chosen to use and

Printer Friendly instructions to follow as you work

NB: Acrylic Paint Binder Medium

Mixing: 1 part Binder Medium to 3 parts water

Premix some of the binding medium and save in a small disposable jar or bottle.

Using this medium as you paint instead of adding just water will seal the paint and brighten the colours.

It is particularly useful when returning to a dried area and adding more acrylic paint as the dried layers are less likely to lift off when wet paint is worked into them.

NB: Water Atomizer

Very lightly spray your palette or artwork if paint is drying too fast (I don't recommend paint drying retarders).



The completed 10 piece group project.

Templates, photos and Printer Friendly instructions are in separate files on your CD, or in your zipped folder.

To get an overview your eBook, click 'View' on the pdf reader. Then 'Page Display' and then select 'Two Page Scrolling'. By click 'Current View' in your printing preferences you can print any chosen flower for detail printing.



Additional Painting Suggestions

**These instructions demonstrate a more permanent artwork display.
However, there are a variety of ways to use the templates.**

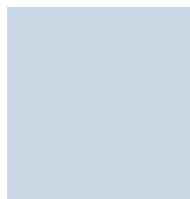
- * Print selected templates on A4 white copy paper and use just for colouring in with pencils or coloured markers. Or use a stronger paper and paint with acrylic or watercolour paints.
- * Join your templates together before tracing and create a one-piece artwork. You will need a board or canvas measuring W40 x H20inches (H102 x W51cms)
- * Print the templates onto coloured A4 paper and cut out the flower and leaf shapes to create a collage. Add other shapes and textures for tactile effect.
- * Create individual small paintings with a flower template, ideal for fundraising and gifts
- * Add some more butterflies, ladybugs or flowers - but don't let the painting become too cluttered, especially if it's for a care centre.
- * Use the 10 pieces of artwork, or the 10 photographs mounted on cardboard, as a puzzle for care-recipient's to arrange into position.
- * Trace only the flowers onto white poster cardboard. Paint or colour as desired. Arrange the flowers on a large coloured poster cardboard to portray either as a bunch with a bow or standing in a vase created from cardboard and maybe decorated. Use craft cord, wool or cardboard strips as the stems. Add a ribbon tied in a bow. For a 3D effect glue some pieces of foamcore behind the flowers before pasting on poster.
- * Trace only a few of the flowers in the lower sections, especially the 2 lower corner sections, if you think they are too detailed for your care-recipients.
- * If you know Paper Tole techniques then print extra copies of the photos or templates to colour and create a 3D artwork.
- * Enlarge or reduce the templates on a photocopier to change the size of the painting.
- * Paint the flowers and background to suit your decor colours.
- * Paint the flowers using single colours, without shadows and detail, this will make the artwork more abstract.
- * Use templates to cut out fabrics to create a textured collage to provide tactile sensory experiences.
- * In-between the tracing and painting stages paint the flowers and stems with white texture compound to give a tactile quality and additional interest.



Mix sufficient paint to cover the flowers and background; also the outlines and sides (optional). If you are working this as a more permanent artwork you will need to paint 2-3 coats of the paint to give a rich texture, but this is optional. Also, acrylic paints dry darker so it is often hard to remix the exact colour you have been using. By clicking the + button on the pdf viewer you will be able to get a closeup view, up to 400% increase in size will still be in focus.



If you are mixing colours for flowers then paint petals at different positions on the flower rather than continuing on from one petal on to the next. This will avoid an unbalanced look if your paint needs topping-up. It is difficult to remix exactly the same colour.



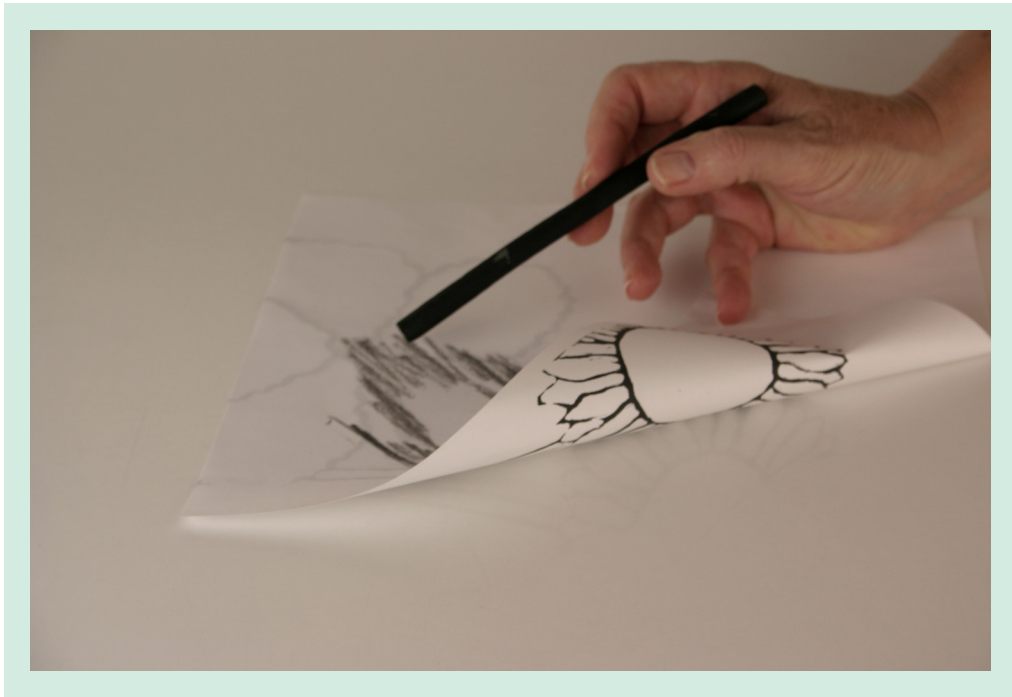
This Blue Background:
Cerulean Blue and Titanium White



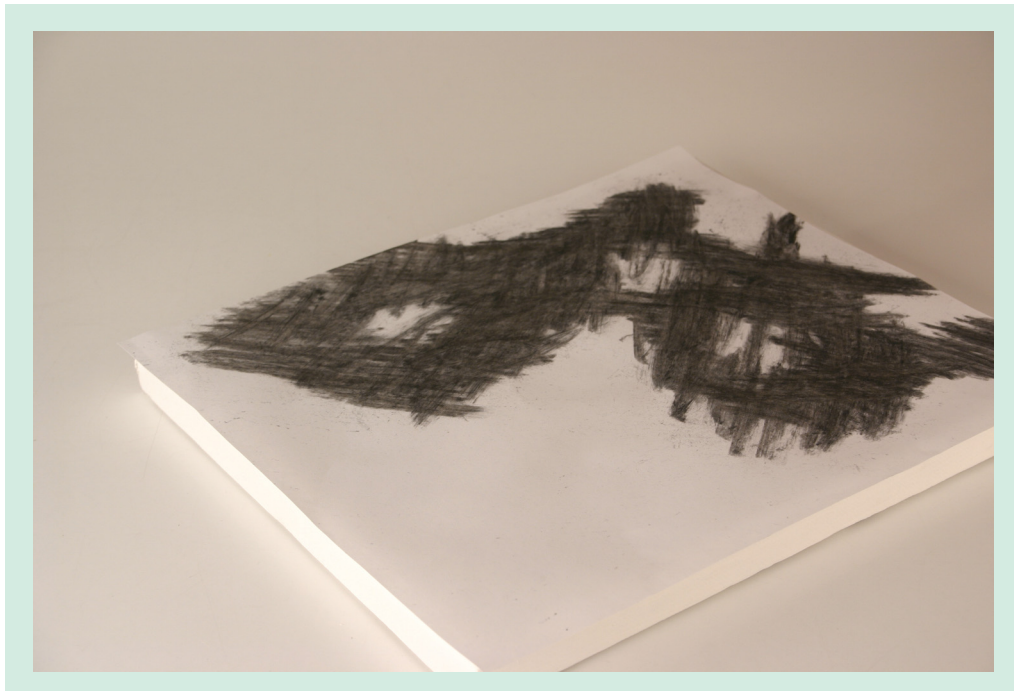
Outline & Canvas Edges:
1 part Cerulean Blue & 2 parts Mars Black
(or use Paynes Grey)



Most leaves & Stems:
Forest Green & Transparent Yellow
When painting add some Olive Green to darken

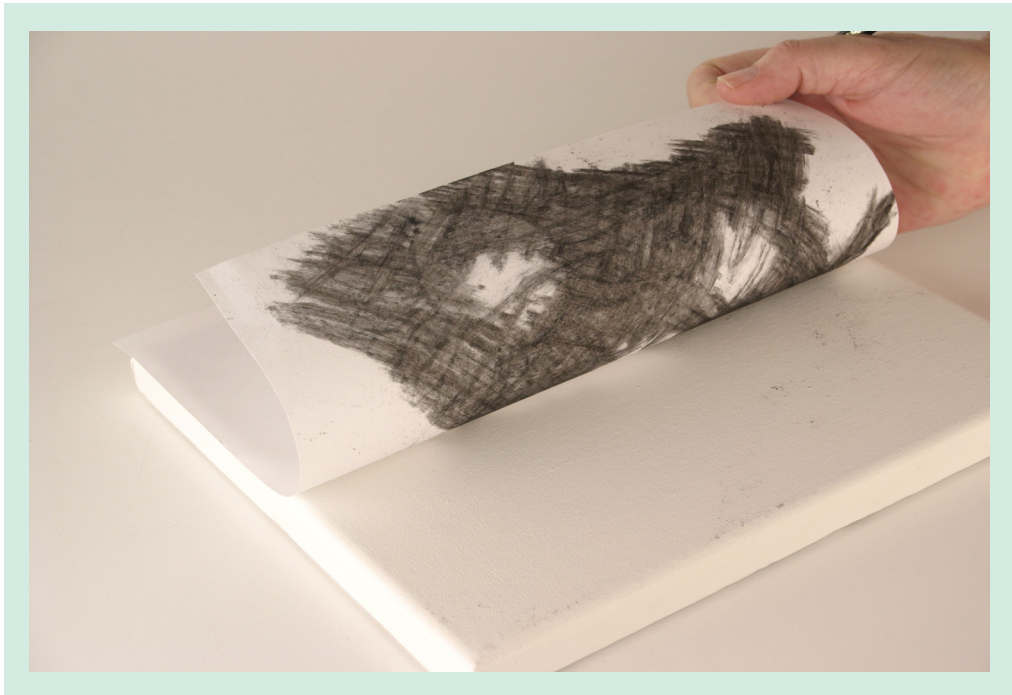


use either the Fine Line templates or the Wider templates. Turn over the printed template so that the printed area is facing down on a flat, non-textured surface.



Rub the charcoal over the whole area that backs on to the design. You may use a soft pencil such as 6B or 8B at this stage which will be less messy but will take a longer time to cover the area.

You may prefer to do this shading with a soft 4B or 6B pencil, it will take longer but is a little less messy.



Turn the page over gently so that the charcoal/pencil area is facing the canvas. Avoid moving the paper as the charcoal will smudge easily. Secure the page to the canvas with a few pieces of masking tape if you prefer.



With the HB pencil trace over all the printed lines on the design. Carefully lift the paper off the canvas.



If you have used charcoal then with the pencil draw over the charcoal markings to prevent the design being brushed off.

There is the option to start painting at this stage.

Outlining will bring out the design. It is also easier for people to see the actual flower they are working on.



Mix 2 parts of the Mars Black with 1 part of the Cerulean Blue to create a grey/black that is not as harsh as using pure black from the tube.

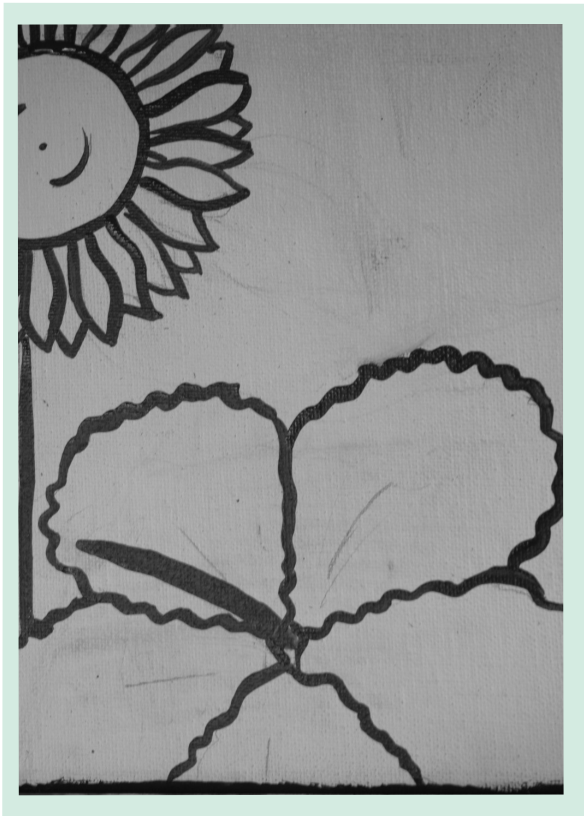
With the black mixture and the script brush outline the pencil markings. This requires a steady hand and patience.

Alternatively, you may prefer to use a waterproof, permanent marker



Paint the edges of the stretched canvas. The paint can go on the sides and the small lip to the front surface of the canvas.

If you are working this as a group project, this part of the painting may be suited to someone who doesn't want to paint art but has been a handy-person or enjoyed working with their hands in other fields.



When the paint is dry, gently wipe off any charcoal dust with a soft rag.

There are simple and detailed designs. It may be easier to follow the design outline with the photo of the finished, coloured painting next to the canvas.



Stand back and check how your project is going.

Canvas #1

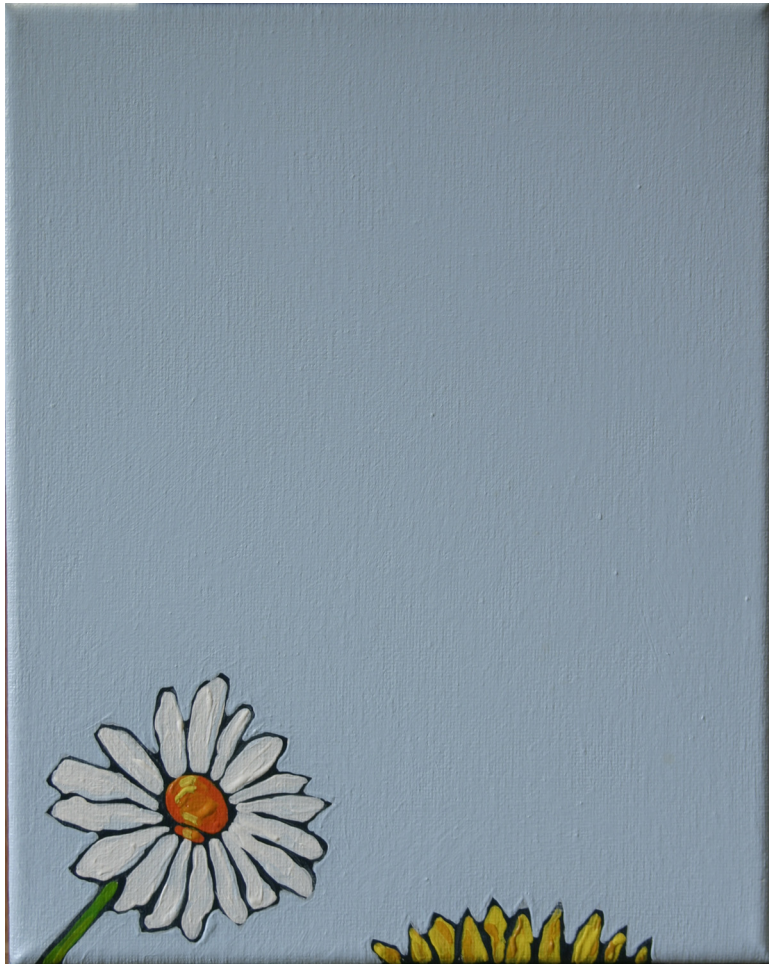


Roses: Alizarin Crimson
Alizarin Crimson & Indian Yellow
Naphthol Red Light
Transparent Yellow
Alizarin Crimson & Titanium White

Leaves: Olive Green
Forest Green
Forest Green & Transparent Yellow
Transparent Yellow

Thorns: Raw Sienna
Transparent Yellow

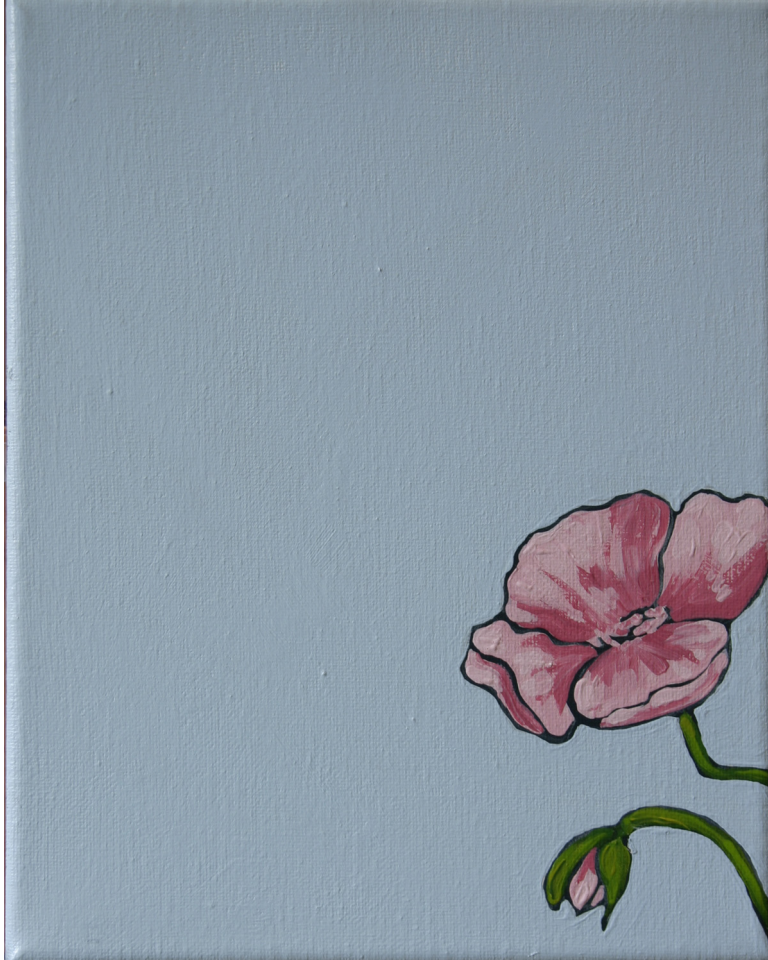
Canvas #2



Daisy:
Work with adjoining
canvas # 6

Sunflower:
Work with adjoining
canvas # 7

Canvas #3



Poppies: Alizarin Crimson
Alizarin Crimson & Titanium White
Naphthol Red Light & Titanium White

Stems:
Work with adjoining
canvas #9

Canvas #4



Sunflower:
Work with adjoining
canvas # 5

Poppy:
Work with adjoining
canvas # 3

Leaves & Stems:
Work with adjoining
canvas #9

Canvas #5



Sunflower Petals:	Raw Sienna Indian Yellow Transparent Yellow
Sunflower Centre:	Burnt Sienna Dioxide Purple Red Gold
Hibiscus:	Indian Yellow Transparent Yellow Transparent Yellow & White
Hibiscus Centre:	Orange

Canvas #6

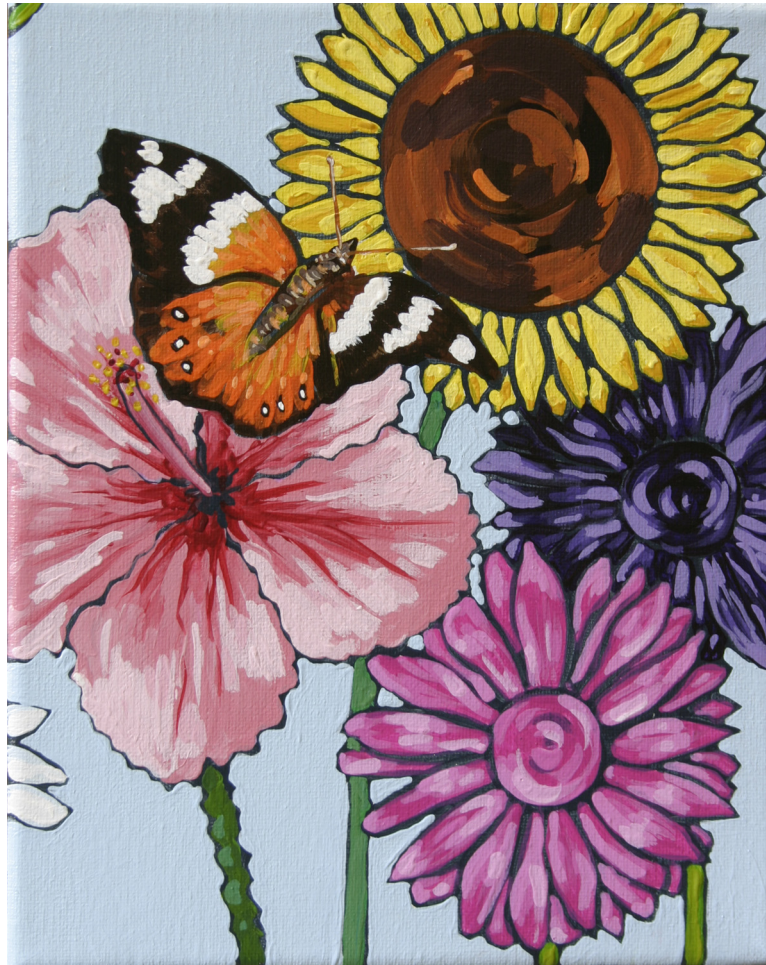


Daisy Centres: Orange
Red Gold
Transparent Yellow

Daisy Petals: Cerulean Blue & White
White

Daisy Leaves: Perm. Light Green
Perm. Light Green & Transparent Yellow
Transparent Yellow

Canvas #7



Sunflower Petals:	Raw Sienna Indian Yellow Transparent Yellow
Sunflower Centre:	Burnt Sienna Dioxide Purple Red Gold
Hibiscus:	Naphthol Red Light Naphthol Red Light & White Naphthol Red Light & Extra White
Hibiscus Centre:	Alizarin Crimson
Pink Gerbera:	Magenta Magenta & White Magenta & Extra White
Purple Gerbera:	Dioxide Purple Dioxide Purple & White Dioxide Purple & Extra White
Butterfly:	Burnt Sienna White Red Gold Indian Yellow Indian Yellow & Transparent Yellow

Canvas #8

Purple Gerbera:
Work with adjoining
canvas # 7



Purple Gerbera:
Dioxide Purple
Dioxide Purple & White
Dioxide Purple & Extra White

Dark
Orange Gerbera:
Orange
Red Gold
Indian Yellow

Light
Orange Gerbera:
Orange
Orange & Indian Yellow
Orange & White
Orange & Extra White

White Petal of Iris:
Work with adjoining
canvas # 9

Leaves:
Work with adjoining
canvas #9